

Mark[®] 1210cw



**Wireless Freedom.
Speed. Performance.**

The team that created the standard of digital imaging in equine practice now offers you the first wireless, portable console DR system.

Simple to use, lightning fast, exceptionally reliable, yet wireless. The Mark[®] eSeries 1210cw frees you to achieve diagnostic excellence with minimum effort.



YOUR IMAGE IS OUR BUSINESS.



a VCA ANTECH company

800.268.5354 soundeklin.com



Mark[®] 1210cw

Simple to use, lightning fast,
exceptionally reliable, yet wireless!

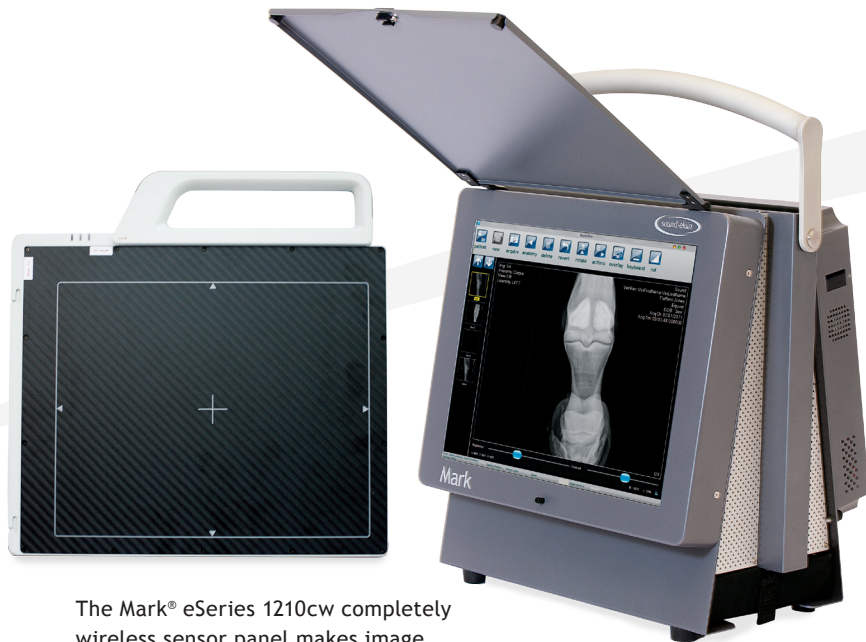
Specifications

Sensor Panel

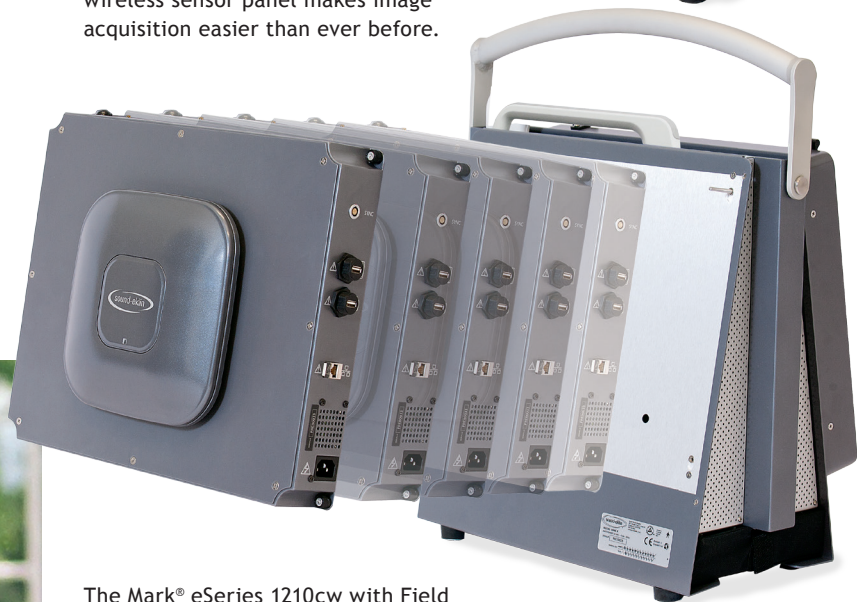
Model	Rayence 1210cw
Type	Amorphous Silicon TFT X-Ray Converter: Csl. TI
Acquisition Time	5 seconds
Imaging Area	10" x 12", actual size 25.4 cm X 30.48 cm, actual size
Pixel Pitch	127 Micron
Pixel Array	2080 x 2560 pixels
Grayscale	16 bit
Weight	6.28 lbs 2.85 kg
Dimensions	15.55" w x 13.26" h x 0.70" d 39.5 cm w x 33.7 cm h x 1.8 cm d

System

Weight	39 lbs. 17.69 kg
Processor	2.53 GHz Intel Core 2 Duo Processor
Memory	8 GB RAM, 240GB SSD
OS	Windows [®] 7
Display	17" Touchscreen



The Mark[®] eSeries 1210cw completely wireless sensor panel makes image acquisition easier than ever before.



The Mark[®] eSeries 1210cw with Field Replaceable Electronics Box removed.



YOUR IMAGE IS OUR BUSINESS.



a VCA ANTECH company

For information or a demonstration call

800.268.5354 soundeklin.com

