



dicomPACS[®] vet Module description

Module name: ***dicomPACS[®] vet Patient CD Module***

Version number: 5.1

State : November 1st 2006

Order code: G-2003



Patient CD Module

Introduction:

The **dicomPACS® vet** Patient CD Module is multi-medial. Besides copying the usual images of your patients such as X-ray and sonography images you can save any other personal data on the CD, for example documents, faxes, operating-theatre video recordings, Word documents, sound recordings and many more.

A complimentary viewing program will be accessible from the CD; you can then play back the CD from any commercially available computer without having to install new programs on the hard disk of your computer.

This variety, and at the same time its simplicity makes the very flexible DICOM format possible. You can display these data with any DICOM viewer of your choice. Moreover, it is possible to transfer all data to another PACS directly, so that they can be saved there.

Overview of functions:

With the help of the Patient CD Module all displayed or selected images are copied to a CD or memory stick at the same time as archiving them (unless this has already been done). Before copying, please make sure that all images

have been assigned to patient data. If this is not the case, the appropriate dialog box will appear.

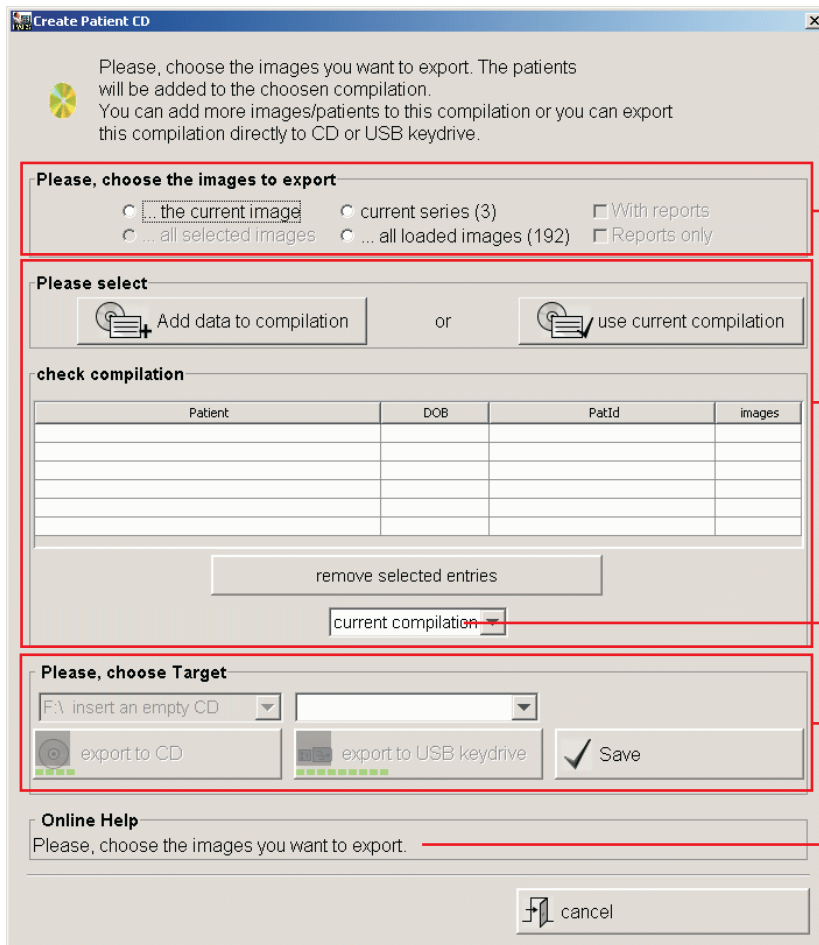
An almost fully functional version of **dicomPACS® vet** will also be copied to the CD or memory stick.

The CDs will run on any Windows operating system from Windows 2000 upward and on Apple MAC OS 10.x or Linux. The machine should conform to current standards.

The CD Viewer should fulfil the same hardware requirements as the normal **dicomPACS® vet** Diagnostic Module. The included version of **dicomPACS® vet** will only start from the CD and not from a hard disk.

There are various ways of using this program module. There are facilities to save lists of previously copied images for further copying later, and to save images from several patients on a CD, DVD or memory stick.

Existing image lists can later be added to and copied again. It is also possible to selectively delete entries from an image list.



A Image selection

B List of images to be exported

Name of the active image list

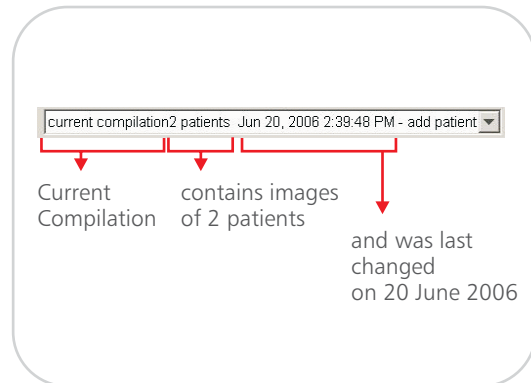
C Selection of the drive (CD/ memory stick)

Online help

A This field provides a choice between adding the current image, all selected images or all loaded images to the currently displayed export list. The number of currently selected and loaded images is shown in brackets after the respective entry. Alternatively, the images currently displayed on the export list could be copied straight to CD/DVD or memory stick without adding further images.

B This table contains the name, DOB, patient ID and number of objects of all patients for whom objects are to be exported. Single entries are deleted by selecting them with the left mouse button and clicking on the icon "Remove selected entries". There is also an option to delete the complete list.

dicomPACS® vet remembers the last 10 export lists so that these may be copied again later. The name of an export list is generated automatically and is put together as follows:



There is an option to add further images to already existing export lists. The icon “Add patient” may be used to copy images of several patients to a CD/DVD or a memory stick. As an example, a surgeon might load all images for the preparation of surgery planned for the following week onto a memory stick and then view and edit the images with the help of the included viewer at the PC of the operating theatre.

C The program automatically creates a list of all CD/DVD drives and connected memory sticks. This list may be used to choose the drive to copy the images to. The copying process is started afterwards by clicking on the respective icon.

