

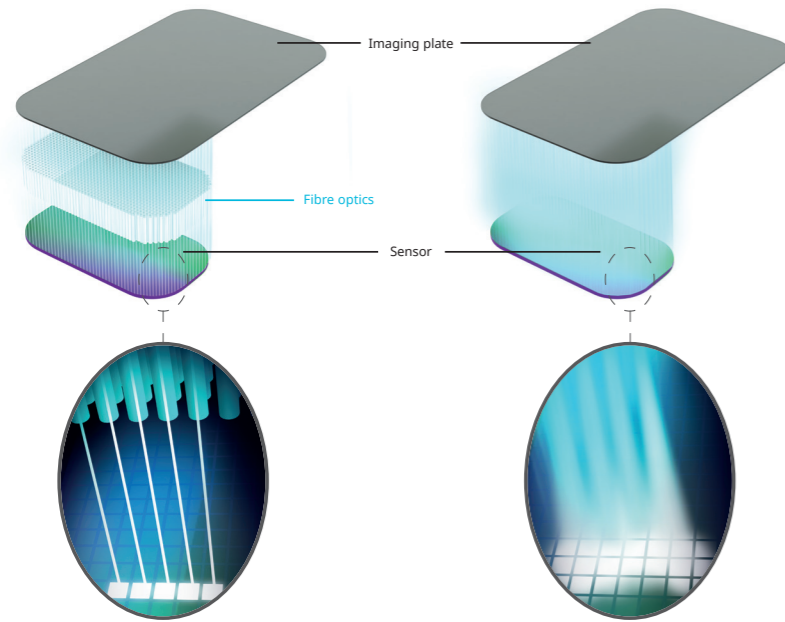


SOPIXSERIES

STRIKING CONTRAST FOR A MORE RELIABLE DIAGNOSIS

WITH FIBRE - FIBER2PIXEL®

WITHOUT FIBRE



2 FIBER
PIXEL



SOPIX¹



With proven quality and reliability, SOPIX produces a high quality image at an affordable price

SOPIX²



This sensor provides an exceptional image quality, using the most advanced technology

SOPIX^{INSIDE} SOPIX^{INSIDE}



This sensor is directly integrated into the X-Mind unity, resulting in a reduction of X-ray emissions

Ace
technology

Available on all SOPIX® series sensors, the patented ACE® technology freezes the image during acquisition to **protect it from over-exposure. Acquire perfect image the first time and every time!**

FAST AND EASY TO USE

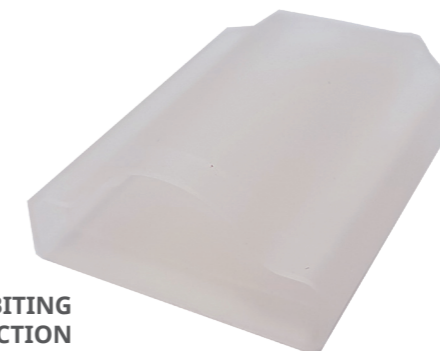


Save time with a sensor that is **always ready to acquire**. The image is **displayed immediately**. **White side stripes** ensure high visibility of the sensor in the dark area of the mouth, to correctly position the X-ray tube perpendicular to the sensor.



ACCESSORIES

ANTIBITING
PROTECTION



SHEATHS FOR
SOPIX SERIES SENSORS

COMPLETE AND INTUITIVE SOFTWARE

SOPRO imaging Veterinary

- Capture of videos and images
- Add comments
- Print, send by email and export of all datas
- Ergonomic and intuitive
- Multilingual software (available in 27 languages)
- Compatible with Windows and constantly updated packs
- User friendly database to store all patient



SOPIX SOPIX²

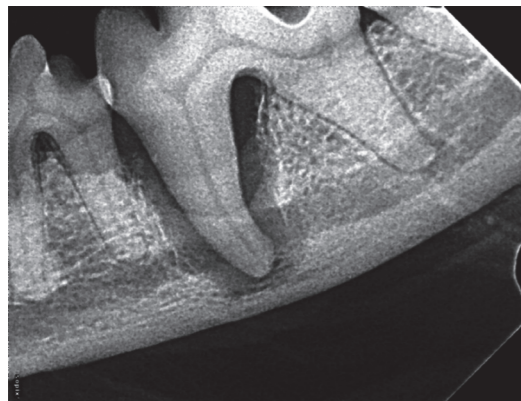
SIZE 1

- External dimensions.....25 x 39mm
- Active surface area 600mm² (20 x 30mm)
- Number of pixels 1.50millions

SIZE 2

- External dimensions.....31 x 42mm
- Active surface area 884mm² (26 x 34mm)
- Number of pixels 2.21millions

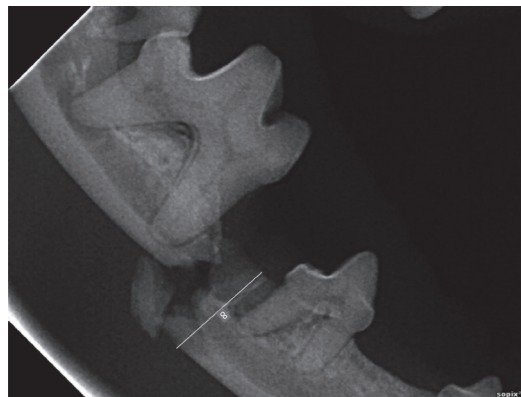
- SYSTEM**
- Technology CMOS + scintillator+ optic fiber
 - Pixel size 20 x 20µm
 - Theoretical resolution 25lp/mm
 - Connection USB 2.0
 - Total cable length for SOPIX²/SOPIX 3.70m
 - Sensor cable length for SOPIX² INSIDE/SOPIX INSIDE 0.70m



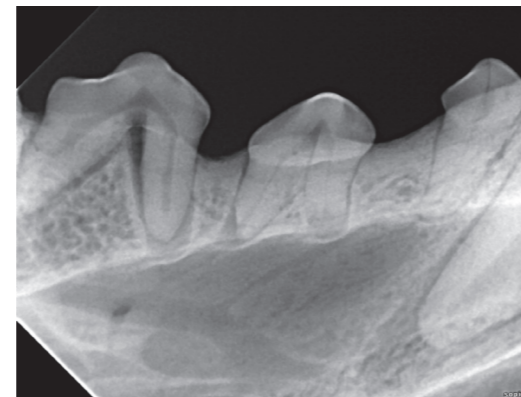
Courtesie of Dr Boutoille (France)



Courtesie of Dr Boutoille (France)



Courtesie of Dr Boutoille (France)



MORE INVENTIVE
LESS INVASIVE

ACTEON® is a pioneer, manufacturer and global leader in digital medical imaging and high-frequency ultrasonics, with its headquarters in France and distribution in 94 countries.

ACTEON® has strived to play a leading role in building a link between human and veterinary medicine, particularly dentistry, in order to improve standards of animal care.

ACTEON®
17 av. Gustave Eiffel | BP 30216 | 33708 MERIGNAC cedex | FRANCE
Tel + 33 (0) 556 340 607 | Fax + 33 (0) 556 349 292
E-mail: acteonvet@acteongroup.com | www.acteongroup.com

