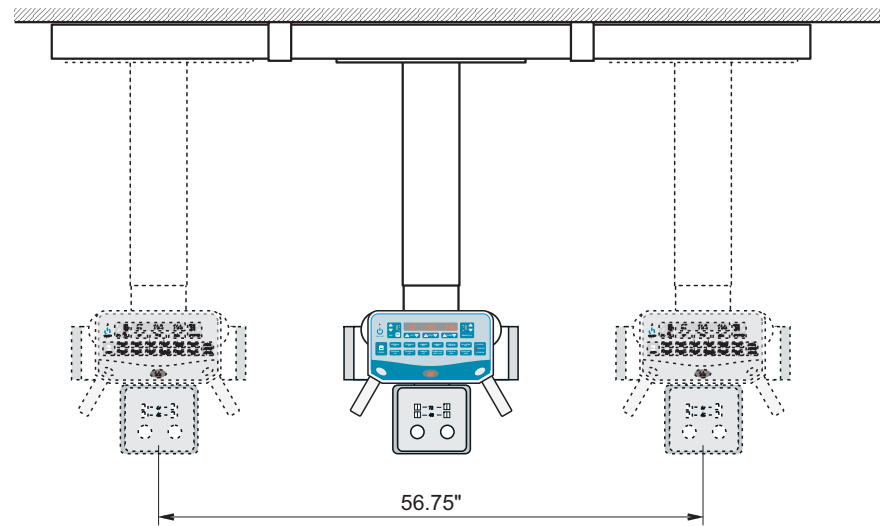
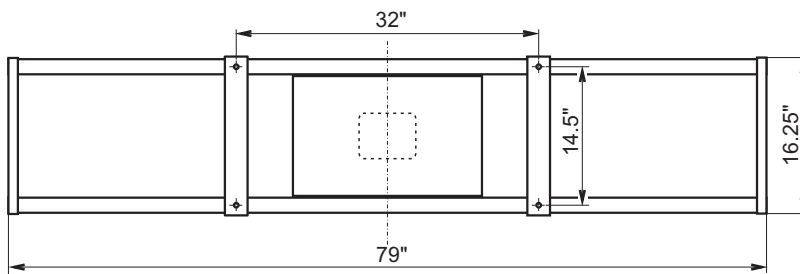


Longitudinal rail TOP VIEW



Note: The vertical ceiling-focus distance is adjustable from 35.25" to 39.25" in 2" increments during the installation.

Designer		Title	VOTC Dimensional Drawing		Doc. Number	6520-DD01-A		
Drawn by	L. Adrovitz	Checked by	L. Breda	Approved by	L. Breda	File:	VSTX01A.cdr	
Checked by	L. Breda	Date:	04.07.2003	Scale:	NONE	Sheet	1 of 1	
Approved by	L. Breda							