

- Outstanding patient coverage with wide detector and table top stroke
- Fully operational at maximum patient weight
- Easy patient loading with low loading position
- High Vertical Speed for fast positioning

ARCO TABLE NT 0055

General performance data

Table top

- Max patient weight 250kg
- Material Rohacell, 0,9mm aluminum equivalence
- Length 2400mm
- Width 853mm
- Longitudinal travel +/- 600mm (electrically controlled brakes)
- Lateral travel +/- 157mm (electrically controlled brakes)

Detector movement

- Longitudinal travel up to 850mm (detector/bucky dependent)

Table Vertical Travel

- Min height 555mm
- Max height 935mm

Output/Input

- Table height output (for tube stand vertical tracking)
- Collision protection input
- Mains connection 110/240V AC single phase

Ambient Conditions

- Temperature 10 - 40°C
- Humidity 30 - 75% relative humidity, non-condensing

Approvals

- UL, CSA cETLus
- CE, CB IEC/EN 60601-1, I
- Standards EC/EN 60601-1-3, IEC/EN 60601-2-32, CAN/CSA C22.2No 601.1, UL 60601-1

Options

- Advanced and reliable collision protection
- Automatic collision sensing (vertical movement)

Controls

- Table hand control
- Foot switch (releases long. and lat. separately)
- Foot switch (Floor placed 1260mm long table top release switch)

Output

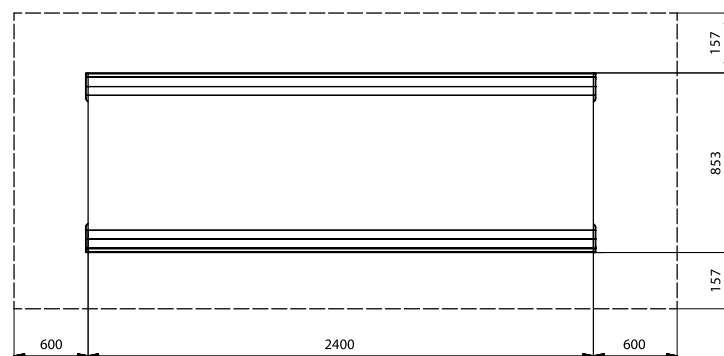
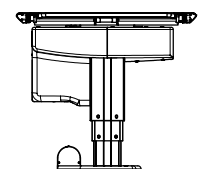
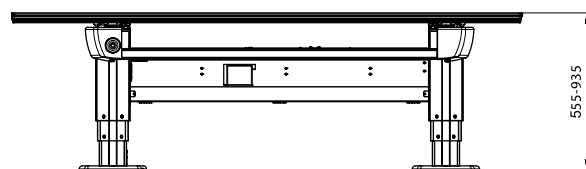
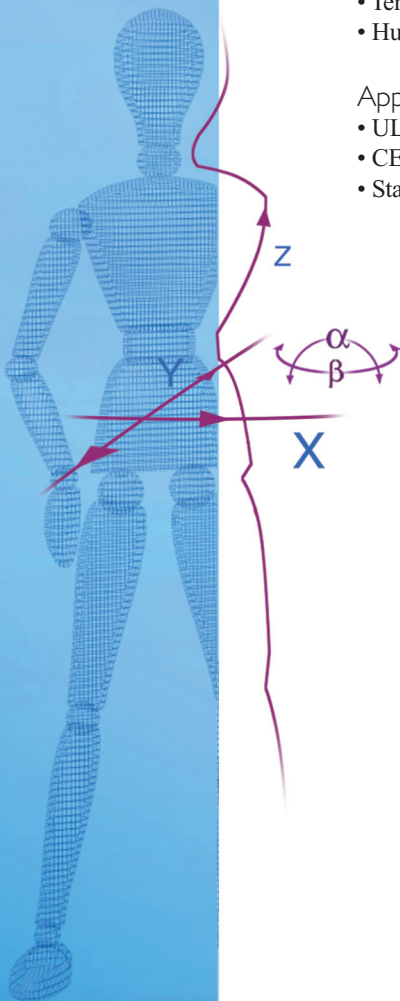
- Table top output (relay activated when table top brakes released, e.g. for activation of collimator light)

Motorised detector movement

- (requires an Arco Ceil 0070-T1 system)
- Auto positioning movement
- Automatic tracking of tube stand position
- Mechanical collision protection
- System hand control
- Automatic detector pick-up
- Detector in position indication

Accessories

- Head rest (straight and angulated)
- Lateral cassette/detector holder
- Compression device
- Patient hand grip
- Mattress



All distances in mm.